

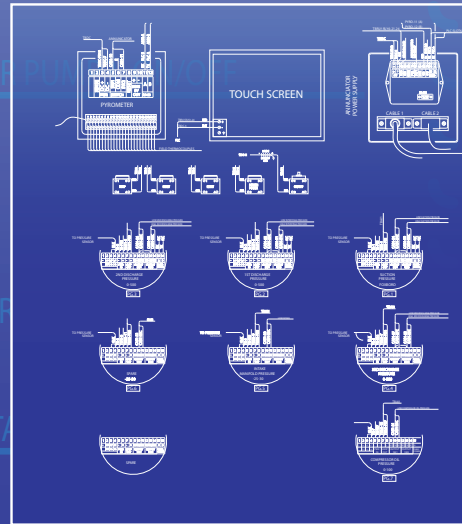
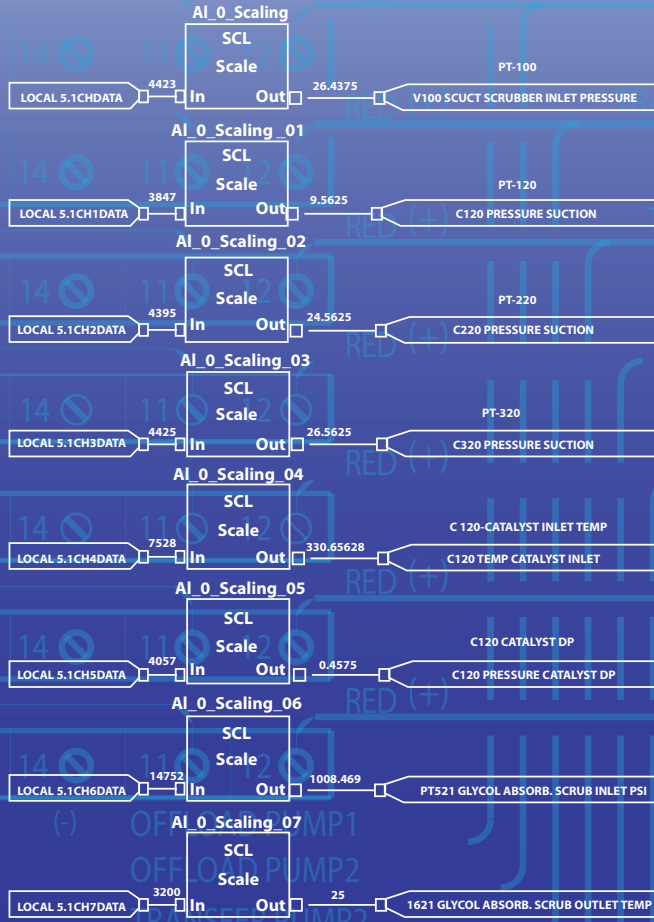


Resource

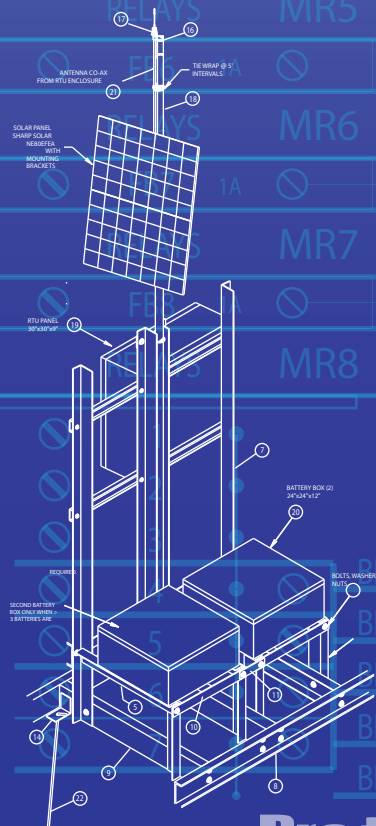
AUTOMATION & ELECTRICAL

Rockwell Automation
ALLEN-BRADLEY

EMERSON



Laird TECHNOLOGIES



Pro-face TOUCHSCREENS

FOXBORO



ADVANCED TELEMETRICS

ENGINEERING & TECHNICAL SERVICES

FISHER ROC™

MAGNA CABLE MINERAL INSULATED CABLES

SHARP

BRN	A2(-)	A1(+)	24V
YEL	A2(-)	A1(+)	24V
GRY	A2(-)	A1(+)	24V
PINK	A2(-)	A1(+)	24V
TAN	A2(-)	A1(+)	24V
RED/GRN	A2(-)	A1(+)	24V

1	2	3	4	5	6	7	8	9	10	11	12	13	14	15
+	+	+	+	+	+	+	+	+	+	+	+	+	+	+
OUT	IN	IN	PWR	LOOP	OUTPUT	OUTPUT	RS							

Engineering Solutions & Services by Category:

Resource Automation & Electrical's goal is to provide our customers with great service, optimization techniques, and programs that enhance their operations and bottom line. Our continued success and drive to pursue the best results for our customers is evidence of this. We want to provide the BEST SOLUTIONS to our customers needs. No short time fixes, unproven devices, or half way thought concepts. Our way of developing turn-key solutions is using the most experienced knowledgeable staff and technology to provide the best solutions for our customer needs.

Well Site Automation

Oil & Gas Wells

LACT Facility Automation & Design

PLC Based Control, Stop/Start, Water Cut Touchscreen, and Remote SCADA Interface

Salt Water Disposal Facilities

PLC/RTU Based Control, Stop/Start, Access Control Touchscreen, and Remote SCADA Interface

Truck Offload Automation

Truck Offload: Water/Oil

Compressor and CDP Automation

Discharge PSI Control, Suction Control, Temp Control, RPM Control, Recycle Control, ESD, and more.

Safeguard Automation

ESD, Fire Protection,
Gas Monitoring, Tank Levels

Dehydration Monitoring & Controls

Treaters, Dehydrators, Burner Management

UL Approved Panel Fabrication

Custom Built Hazardous (598A) &
Non-Hazardous (608A) Wired Paneling Boxes

PLC Programming

Allen-Bradley, Direct Logic,
Square D, SCADAPAK, and more

RTU Programming

Fisher ROC, Bristol, Weatherford

Facility Monitoring & Control

PIN Facility Access,
Card Reader ID Access, SCADA

CAD Services

2D & 3D Design and Layout

SCADA Programming and Servicing

Custom Remote Facility Control and Monitoring



New Installation & Retrofit Services Overview:

Facility Automation Design

New or Upgraded Facilities

Facility Electrical Design

New or Upgraded Facilities

MCC & Station Control

Master Control Centers and Stations

CAD Services

2D and 3D Design

Conduit and Wire Layout/ Schedules

Strategically Place Conduit and Wire

UL Approved Panel Fabrication

Custom Built Hazardous (598A) & Non-Hazardous (608A) Wired Paneling Boxes

Complete Programming Services

PLC, RTU, Device Programming

"Cause & Effect" Development

Evaluation Tool for Program Logic

End Device Set-Up and Installation

Device Set-Up for Proper Site Function

Calibration & Commissioning Services

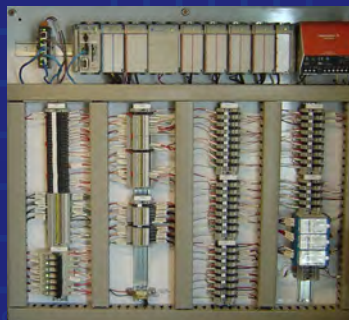
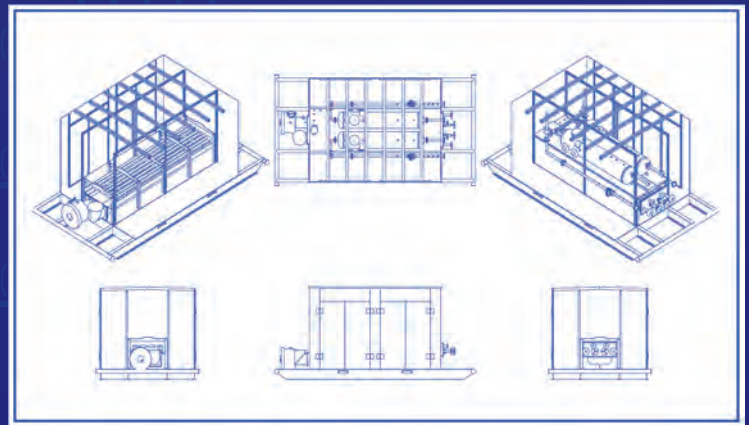
Proper Calibration of Facility Programmed Devices

Operational Training

Training on Proper Operational Uses of Programs and Devices

New Installations & Retrofit Services

If you need a new site integrated with automation or need to bring a current location up to date, we can help. From concepts to design, we aim to use our integration technology and expertise to achieve optimum results. We know that quality matters and hope to show you the difference so you can have a reliable source in automation time and time again.





Resource

AUTOMATION & ELECTRICAL

Distribution or Alliances With the Following Product Lines:

- Rockwell /Allen-Bradley
- Direct Logic
- SCADAPAK
- Square D
- Emerson/ Fisher ROC
- Weatherford
- Bristol
- Sharp (Solar)
- Pro-Face (Touchscreen HMI)
- Altronic
- Murphy
- Rosemount
- Foxboro
- Siemens
- General Monitor
- Detcon
- Deliron
- AMETEK/Chandler Engineering
- Cameron
- ASCO
- Peter Paul
- Minute Man
- FMC Technologies
- REXA Valve Actuators
- ROTORK Controls
- Dynalco
- LINCO
- NATCO
- MagnaCable
- Advanced Telemetrics
- Moore Industries
- B&B Electronics
- Phoenix Contact
- Sierra Wireless
- Freewave
- TopTech
- Tyco
- Bettis
- Daniels
- PetroComm
- Protection Group (Transector Polyphaser)

ENGINEERING & TECHNICAL SERVICES



Resource
AUTOMATION & ELECTRICAL

www.resourceproduction.com

Call : 855.299.3156